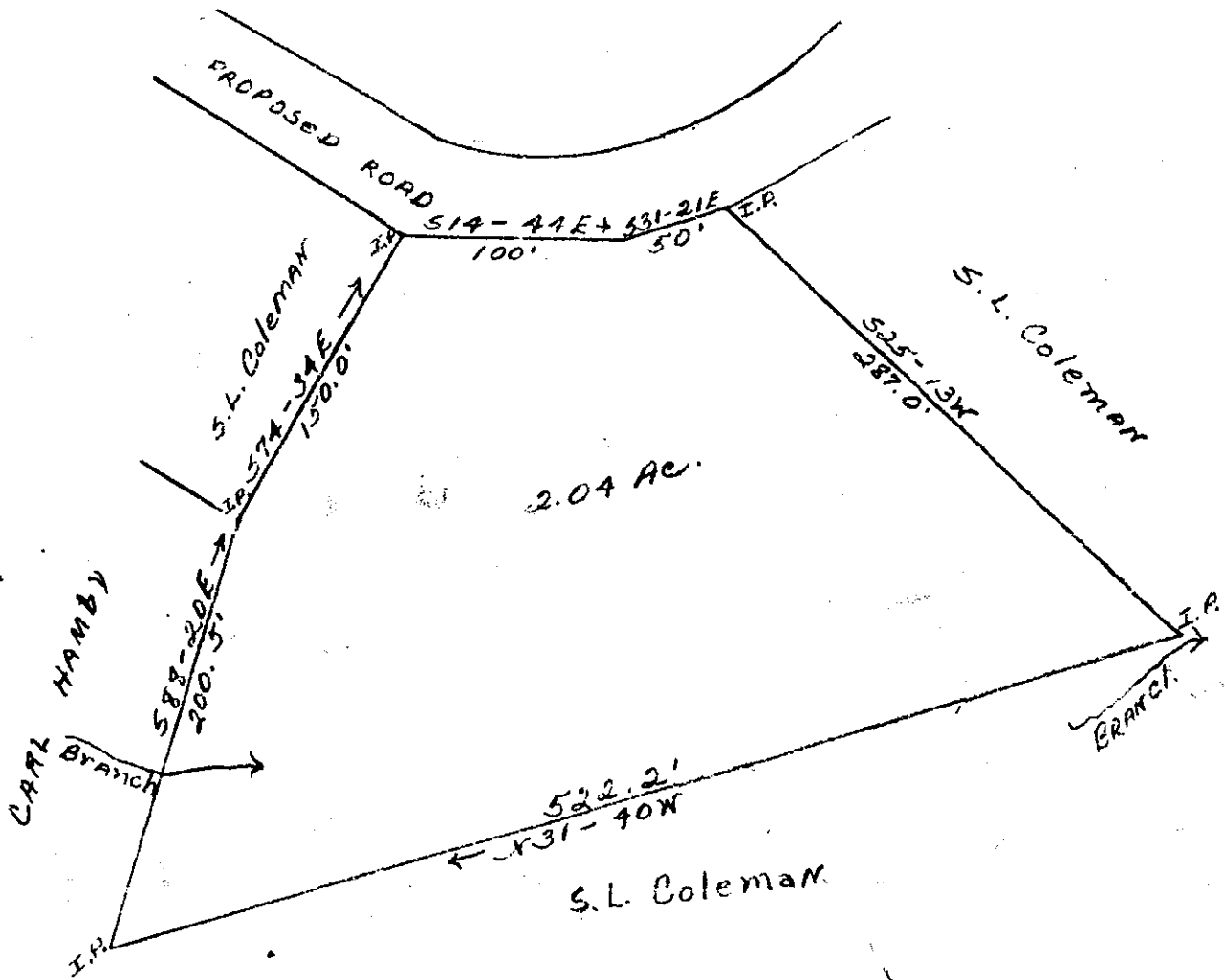


# Plat Book-R R-Page 64

PROPERTY OF  
W.F. COLEMAN  
NEAR FOUNTAIN INN, S.C.  
GREENVILLE COUNTY

SCALE: 1" = 60'  
MAY, 1962  
SURVEY BY J.D. CALMES, S.C. REG. L.S. 1346



FILED  
GREENVILLE S.C.  
JUN 21 4 10 PM 1962  
CLERK OF COURTS  
S.C.

100  
Pete in  
RR-64

JUN 21 1962 31610

31610... JUN 21 1962  
And Recorded in RR 64  
J.D. Calmes  
S.C. REG. L.S. 1346